

A photograph of two men in a workshop setting. The man on the left, with a beard and wearing a dark jacket with a 'STERMAN TECHNISCHE SYSTEME' logo, is holding a mechanical component. The man on the right, also with a beard, is looking at the component. The background features a faint world map and a blue network graphic. The text 'WE'RE NOT DEVELOPING STANDARDS - WE'RE DEVELOPING THE FUTURE.' is overlaid in large white letters.

**WE'RE NOT DEVELOPING  
STANDARDS - WE'RE  
DEVELOPING THE FUTURE.**

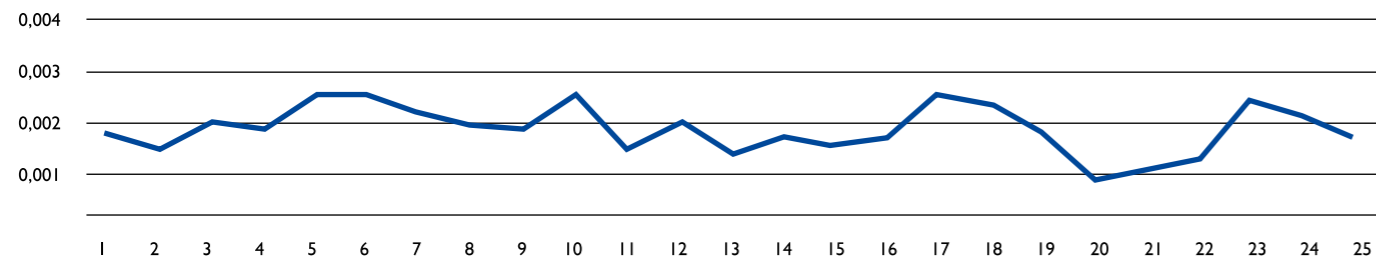
*μ*-THINKING®. Great things always start in detail.

[www.sterman.de](http://www.sterman.de)

**STERMAN®**

# OUR A B C OF THE COMPLETE MACHINING OF GEARS:

The new type of high-quality, deformation-free and centrifugal force independent membrane clamping technology PFM.



Concentricity in millimeters: Hard turning of the bore of a helical toothed gear in the chuck size B, reference Ø 85 mm

## A

<b>Clamping range</b>	Ø 28 mm – Ø 58 mm in pitch circle, root circle, tip circle or Ø
<b>Outside</b>	Ø 180 mm
<b>Height</b>	175 mm
<b>Weight</b>	20 kg

Pre-centering for protecting the centering element

Tooth angle compensation  $\pm 3^\circ$

Independent of centrifugal force

Dual positioning control with rinsing

## B

<b>Clamping range</b>	Ø 58 mm – Ø 108 mm in pitch circle, root circle, tip circle or Ø
<b>Outside</b>	Ø 185 mm
<b>Height</b>	175 mm
<b>Weight</b>	20 kg

Pre-centering for protecting the centering element

Tooth angle compensation  $\pm 3^\circ$

Independent of centrifugal force

Dual positioning control with rinsing

## C

<b>Clamping range</b>	Ø 108 mm – Ø 158 mm in pitch circle, root circle, tip circle or Ø
<b>Outside</b>	Ø 225 mm
<b>Height</b>	190 mm
<b>Weight</b>	30 kg

Pre-centering for protecting the centering element

Tooth angle compensation  $\pm 3^\circ$

Independent of centrifugal force

Dual positioning control with rinsing

Scan the QR code and go directly to the products.



**μ-THINKING®.** Great things always start in detail.



**STERMAN®**



# TOGETHER WE`RE CREATING PRODUCTION TECHNOLOGY FOR FUTURE INDUSTRIAL MANUFACTURING.

We rank among the top quality and technology leaders in the special field of clamping technology and equip numerous renowned companies operating worldwide with highly precise, efficient and smart solutions for their production.

**STERMAN**  
Technische Systeme GmbH

Am Tannwald 10  
78112 St. Georgen, Germany  
T +49 7725 91488-30

[www.sterman.de](http://www.sterman.de)